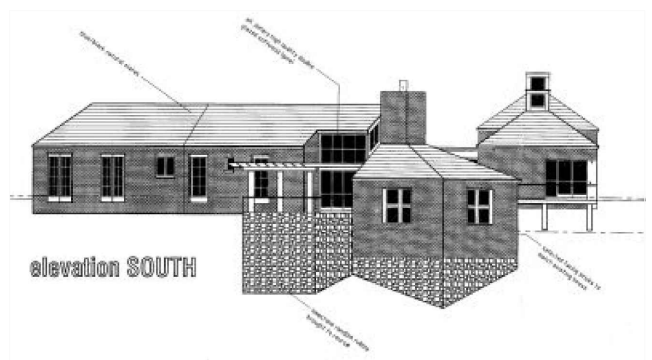
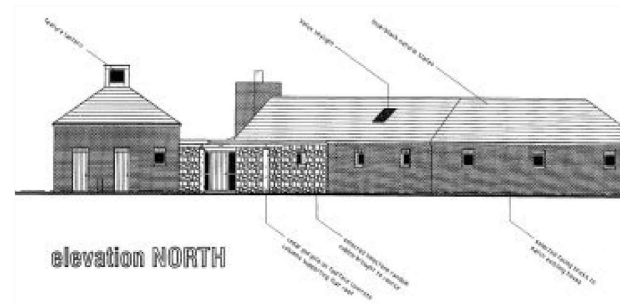
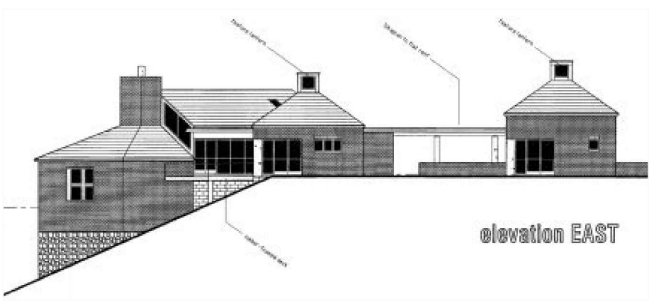
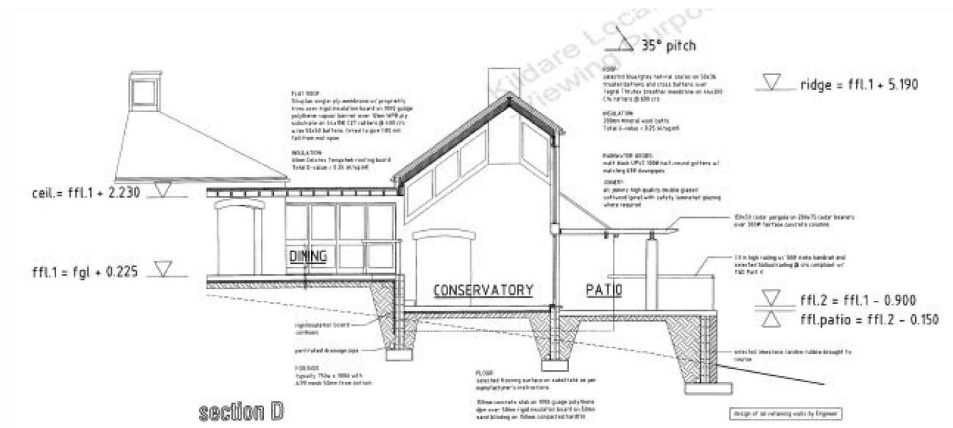
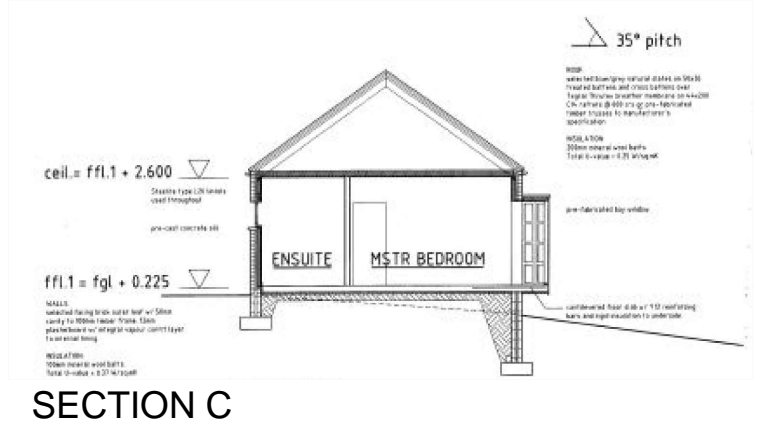
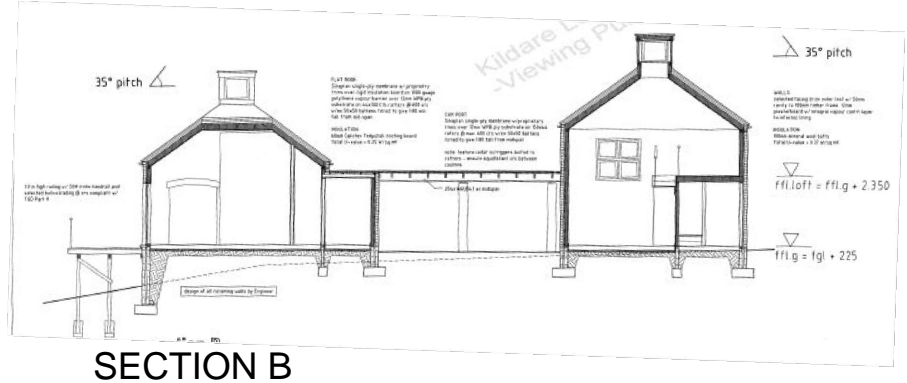
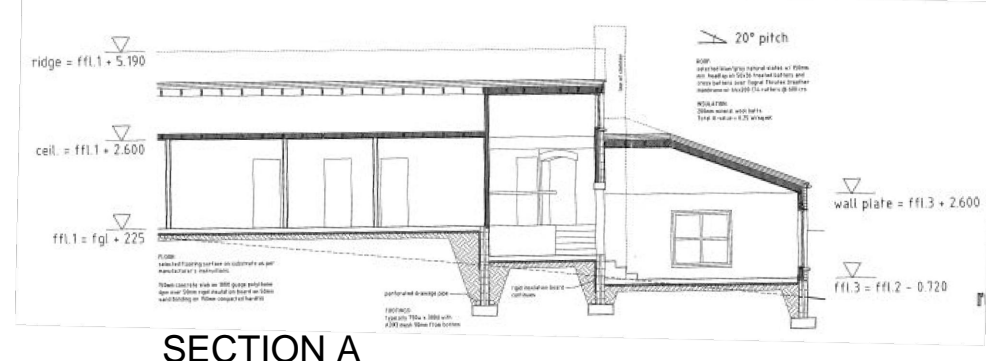
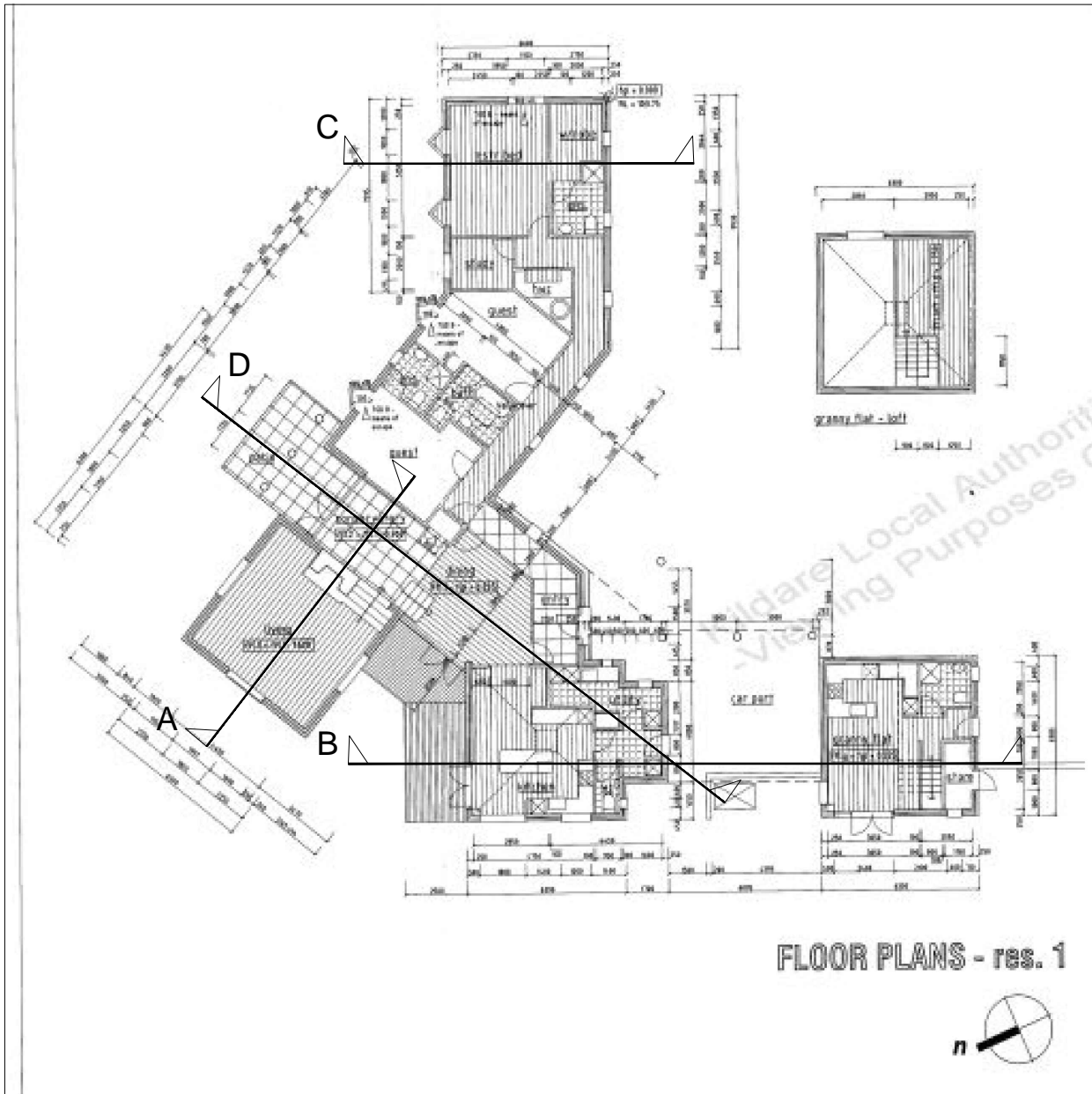


NOTE:
Images presented in this document are for information purposes only and have been obtained from Kildare County Council Planning - Online Planning Enquiry System.



0	11/08/2017	PLANNING APPLICATION	AR	LD	CD	RR
Rev	Rev. Date	Purpose of revision	Drawn	Checked	Rev'd	Apprv'd

JACOBS
Jacobs, Merrion House, Merrion Road, Dublin 4
Tel: +353(1)269 5666
www.jacobs.com

Kildare County Council
Comhairle Contae Chill Dara

Project
KERDIFFSTOWN LANDFILL
REMEDICATION PROJECT

Drawing title
DRAWING 4
EXISTING PLAN AND ELEVATION
FOR REC010 HOUSE
PROPOSED FOR DEMOLITION

Drawing status
PLANNING APPLICATION

Scale
NTS @ A3

Jacobs No.
32EW5604

Client No.
6286

Drawing number
32EW5604-00-064

Rev
0

This drawing is not to be used in whole or part other than for the intended purpose and project as defined on this drawing. Refer to the contract for full terms and conditions.